



Camera Systems



- **Single or dual camera systems**
- **MSHA-approved for underground**
- **Non-MSHA approved regulated systems for surface and outby operations**

Matrix offers mobile equipment users several options for machine-mounted camera and in-cab display systems. These systems offer operators an enhanced ability to visually monitor personnel and other equipment in their operating area.

All cameras and monitors are suitable for underground (MSHA-approved) and surface usage, with enclosures designed for the toughest mining environments.

www.matrixteam.com 

Phone: 812.490.1525 • Fax: 812.490.1582 • 3299 Tower Drive • Newburgh, Indiana 47630 • email: sales@matrixteam.com



C1000 CAMERA KIT

Use this kit along with the D1000 Display Kit to build your own Camera System. This kit includes:

- MSHA-approved XP enclosure
- Camera electronics
- Packing glands

Matrix Part No. 10002533



CAMERA ELECTRONICS

Drop in replacement camera for single- or multi-camera systems. Includes the electronics already mounted on an aluminum backplane ring that is ready to be installed in the Camera XP enclosure.

Matrix Part No. 10003608



D1000 DISPLAY KIT

Use this kit along with the C1000 Camera Kit to build your own Camera System. This kit includes:

- MSHA-approved XP enclosure
- Display electronics
- Packing glands

Matrix Part No. 10002505



DISPLAY ELECTRONICS

D1000

Drop in replacement monitor for single-camera systems.

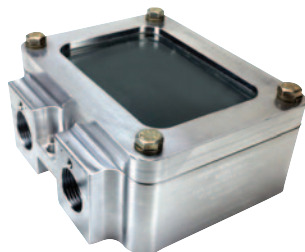
Matrix Part No. 10002659

D1000-S

Drop in replacement monitor for switching camera systems where up to three cameras are in use.

Matrix Part No. 10003522

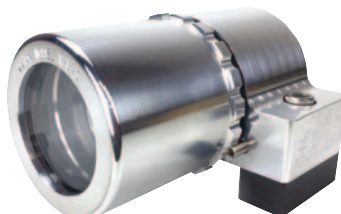
ENCLOSURES



XPE-4

XP square enclosure with lens for monitor. 4.75" x 3.25" x 1.94" internal dimensions.

Matrix Part No. 10004268



XPE-5

XP round enclosure for camera or lights.

Matrix Part No. 10004009



Enclosure for non-MSHA regulated environments.

Matrix Part No. 10004397

FOLLOW US!



www.matrixteam.com



Phone: 812.490.1525 • Fax: 812.490.1582 • 3299 Tower Drive • Newburgh, Indiana 47630 • email: sales@matrixteam.com